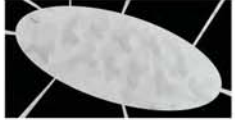


The objective of a new attractive density inside the residential area of Montreux and the possibility of building an urban centrality represent the guidelines of this project while determining its key points: the origin of a system of structures able to dialog amongst themselves while spreading over into the surrounding landscape. They are a network of connections, like a transportation, with flows denser than those of historic paths. They become a web of fluxes, impulses of connection between the buildings and the neighborhood. They are the creation of a different system of public shared spaces among the residences, the system of connections and the territory able to generate



In connection with debates on the opportunity of a reasoned urban density, in opposition to the "twentieth century" planning system, the new buildings of this inhabited landscape design an urban layout along weaving lines. They are like *synapses* or a continuous connection, uninterrupted, among the parts of the same system. The search for a new city layout is intertwined to the neighboring realities of village (Chailly, Clarens and Baugy) where historicized architecture presents itself in a continuous dialog with the landscape, becoming *synapses* on the territory.

And it is here, becoming centrality, that the project finds its first affirmation. The placement of the area Aux Grands Prés at the north of the city makes it a possible *synapse* to the urban territory of Montreux, in the point where the countryside seems to give itself over to the city. Centrality means this as well: intertwining an inhabited space able to come to life with an architectural and functional character serving the territory, between them and the landscape. It is also meaning the architecture inside the existing urban fabric understood as a junction able to generate successive levels of interaction with the place: a virological architecture as *Wiel Arets* defined in his travel toward the contemporaneity with which he treated the conviction: "unlike medicine, architecture does not have any intention to take the city back to its original state. Medical or surgical intervention is verified while architectural intervention in the city is not."

The new architectures of the "logically" of form, figure with three faces on the landscape, are arranged along an axial *synapse*, making up an *urban network* between the project area and the adjacent zones, the neighborhood. The spaces that this intertwining generates, therefore, become the vacancies where the citizen can regain possession of the territory through their multi-functionality, that which we can call a self-management of the inhabited space, the self-management of its time. *urban*



Ordering the structures along the line of movement of the *synapses* means generating a complex structure. It is an *urban network* of the inhabited space where fragment does not constitute discord when the origin resides in the order of the completed sentence. Homogeneity of the intervention avoids engagement of singular structures.



To talk about social stage signifies the definition of a space of the city as a comparison between the suburb and the place. The relationship of contact between landscape and new structures is composed of volumetry of the ground floor that moving along the fabric generator of the project, show themselves as an *extension* of the landscape at various levels, as if it was to open in a series of circumstances to welcome them in its organicity.



The liberated space between the multi-functional structures on the ground floor creates the area where *multi-level* activities define the spaces allocated to free time, in addition to the traditional apartment, house and garden. In these cells, social vegetable gardens contribute to the origin of a *urban network*, or the production of a portion of *urban* controlled by the citizens, as they are the first to recognize their own needs. There will be spaces of the residential area intended as a market, spaces as "a place to meet, chat, play, fight, envy, court and feel proud", then playgrounds for children, pleasure grounds, landscaped green areas and shady areas like city forests. Facing onto these shared spaces, there are structures on the ground floor of the buildings offering services to the neighborhood like cafe, a bakery, small commercial spaces, places for vegetable garden maintenance, market activity, artisan shops and atelier.

The covered area is equal to 17% of the total project area, demonstrating how much intervention is aimed at maintaining a *synapse* with the landscape in this part of the city.



The residential structures, as if balanced above these volumes of public functionality, generate a second zone of built-up space that sees its development on three levels. The multiplicity of the typologies (individual collective living, grouped individual living, protected housing and economic housing) allows the attainment of *urban* and *social* necessary for a new vision of living where the risk of a *multi-aggregate* is avoided.

In the total of diverse architectural *synapses*, the buildings S1 and S3 are planned to house the Nursery school and Kindergarten in a part of the lot where the remodelled hill area allows the creation of patios as protected spaces for the schools.

In the north area of the lot, building S11, Neighborhood *urban*, represents the willingness to conceive the urban intervention of a space serving the whole community as a connecting point between both the project area and the neighborhood, the neighborhood and the city. Entering into the ground, it allows the exploitation of the covering as a projection of the landscape on what is built.



Chailly

Baugy

Clarens

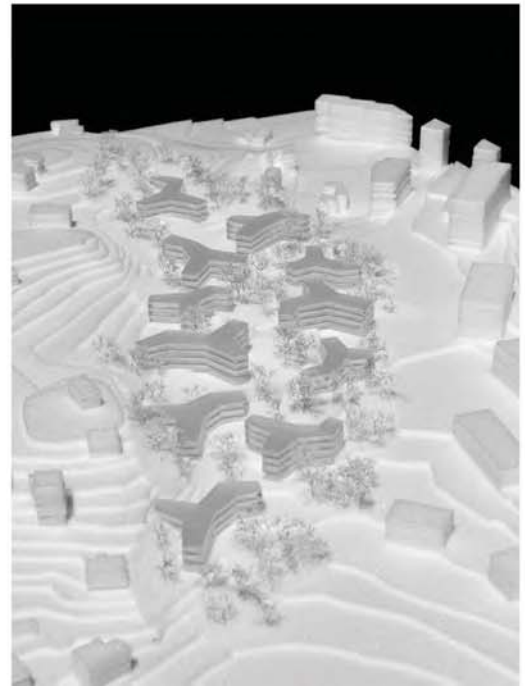


Site plan

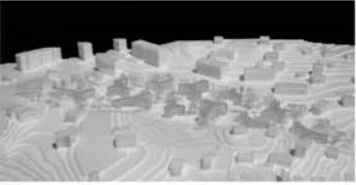
500m
100
50
10

e¹⁰
urban

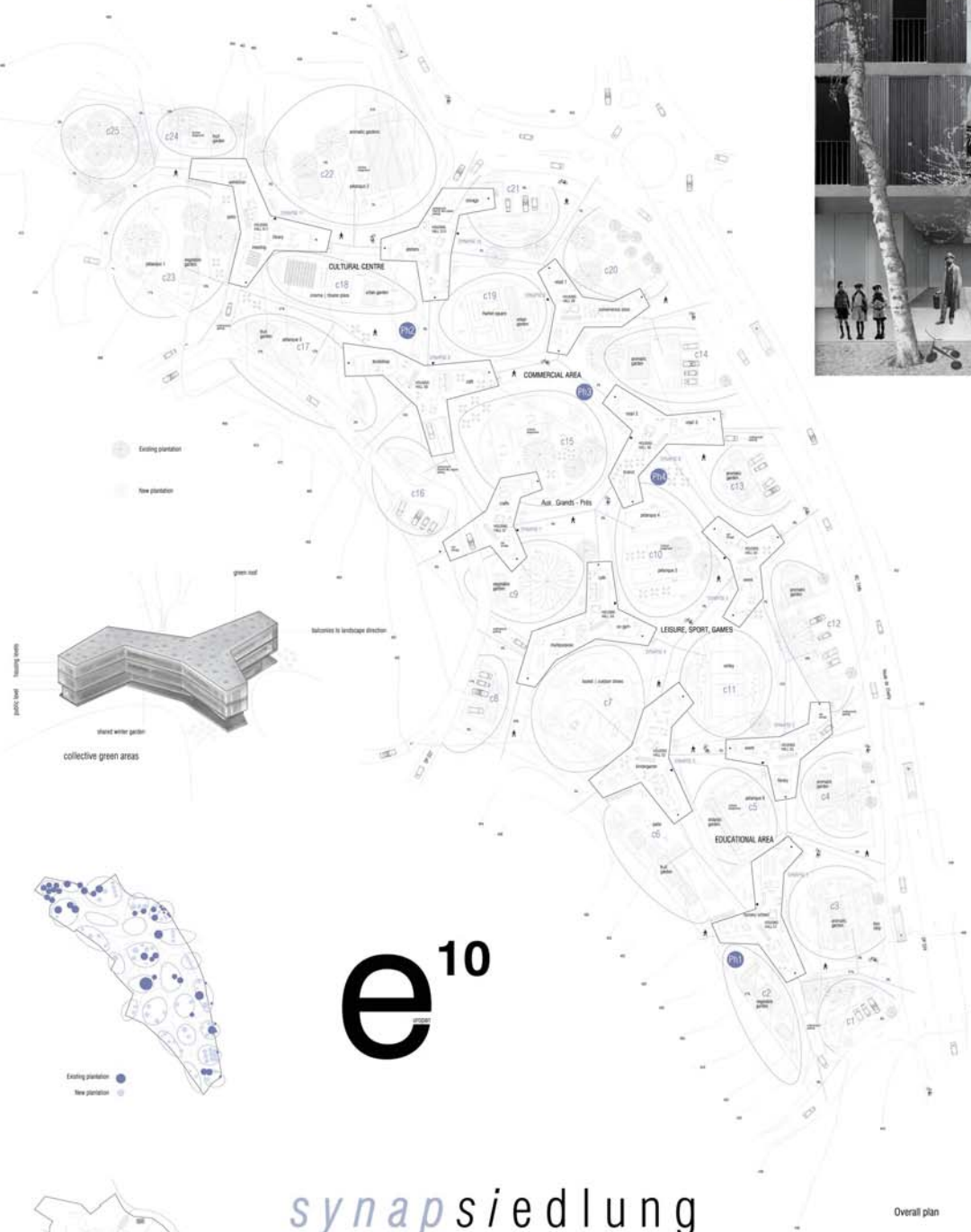
synapsiedlung



East elevation



- Buffer Cell**
- c21: acacia barrier plants, Taxis baccata, Juniperus communis ground floor parking
 - c20: plants resistant to polluting agents: Lavandula latifolia, Quercus robur acacia barrier plants, Taxis baccata, Juniperus communis
 - c14: aromatic garden: Anethum officinale, Dactylorhiza fuchsii acacia barrier plants, Taxis baccata, Juniperus communis ground floor parking
 - c13: ground floor parking aromatic garden: Anethum officinale, Dactylorhiza fuchsii acacia barrier plants, Taxis baccata, Juniperus communis
 - c12: plants resistant to polluting agents: Lavandula latifolia, Quercus robur aromatic garden: Gentiana asclepias acacia barrier plants, Taxis baccata, Juniperus communis ground floor parking
 - c4: ground floor parking aromatic garden: Gentiana asclepias acacia barrier plants, Taxis baccata, Juniperus communis
 - c3: aromatic garden: Gentiana asclepias acacia barrier plants, Taxis baccata, Juniperus communis
 - c1: acacia barrier plants, Taxis baccata, Juniperus communis ground floor parking
- Square Cell**
- c18: urban garden: Lonicera xylosteum, Physalis alkekurg cultural area: clematis, flower plaza
 - c19: urban garden: Malus sylvestris, Actinidia major commercial area: market square
 - c15: urban garden: Taxis baccata, Physalis alkekurg ground floor parking: Lonicera xylosteum, Physalis alkekurg commercial area
 - c10: game area: entrance ground floor parking: Quercus robur
 - c9: vegetable garden ground floor parking: Quercus robur
 - c11: sport area: office ground floor parking: Ulmus minor Miller
 - c7: sport area: basket, football street ground floor parking: Ulmus minor Miller
 - c5: educational area: athletic garden game area: entrance ground floor parking: Ulmus minor Miller
- Climbing Cell**
- c22: aromatic garden: Gentiana asclepias game area: entrance ground floor parking: Quercus robur acacia barrier plants: Taxis baccata, Juniperus communis
 - c23: vegetable garden game area: entrance ground floor parking: Quercus robur
 - c24: hot garden: Blackcurrant, Raspberry ground floor parking: Quercus robur
 - c25: ground floor parking: Quercus robur
 - c17: ground floor parking: Lonicera xylosteum, Physalis alkekurg game area: entrance
 - c16: ground floor parking: Lonicera xylosteum, Physalis alkekurg ground floor parking
 - c8: ground floor parking: Lonicera xylosteum, Physalis alkekurg ground floor parking
 - c6: ground floor parking: Lonicera xylosteum, Physalis alkekurg hot garden: Gooseberry, Blackcurrant, Red currant
 - c2: ground floor parking: Lonicera xylosteum, Physalis alkekurg vegetable garden



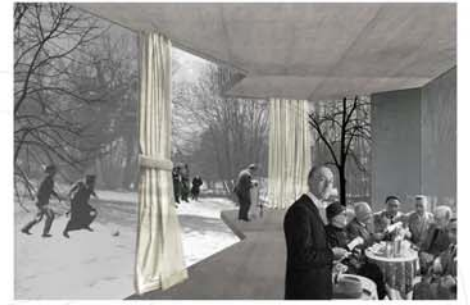
e¹⁰

synapsiedlung

Overall plan



synapsiedlung



CLUSTERED INDIVIDUAL H | S11

INDIVIDUAL COLLECTIVE H | S10

INDIVIDUAL COLLECTIVE H | S9

INDIVIDUAL COLLECTIVE H | S8

e¹⁰

Dweller typologies



dwelling typologies

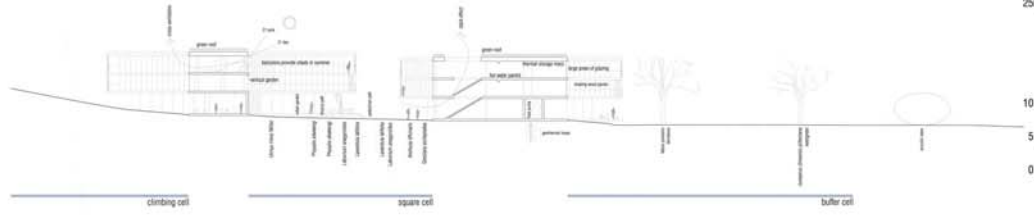
fixed | variable service core



fixed | mobile infra



	living space	external shelf	customized layout
d/per.01	living living 88-112 outdoor living 16-112	wood cladding 12 m glass cladding 12 m shaded wall 12 m	
d/per.01+	living living 102-142 outdoor living 20-142	wood cladding 12 m glass cladding 20 m shaded wall 12 m	
d/per.02	living living 112-142 outdoor living 20-142	wood cladding 12 m glass cladding 20 m shaded wall 12 m	
d/per.02+	living living 122-142 outdoor living 20-142	wood cladding 12 m glass cladding 20 m shaded wall 12 m	
d/per.03	living living 122-142 outdoor living 20-142	wood cladding 12 m glass cladding 20 m shaded wall 12 m	
d/eco.01	living living 124-142 outdoor living 17-142	wood cladding 8 m glass cladding 17 m shaded wall 8 m	
d/eco.02	living living 118-142 outdoor living 18-142	wood cladding 12 m glass cladding 18 m shaded wall 12 m	
d/eco.03	living living 122-142 outdoor living 20-142	wood cladding 8 m glass cladding 20 m shaded wall 8 m	
d/eco.03+	living living 122-142 outdoor living 20-142	wood cladding 12 m glass cladding 20 m shaded wall 12 m	
d/pro.01	living living 124-142 outdoor living 17-142	wood cladding 12 m glass cladding 17 m shaded wall 12 m	
d/pro.02	living living 127-142 outdoor living 20-142	wood cladding 12 m glass cladding 20 m shaded wall 12 m	
d/temp.01	living living 112-142 outdoor living 17-142	wood cladding 12 m glass cladding 17 m shaded wall 12 m	



Gaining and saving energy cross section

